

# Welcome

## Early Years New Parents Meeting 2024



# Welcome Introductions

Mrs Emma Verney-Davies -  
Head Teacher

# The EYFS Teachers

## Ash & Beech Class

- Mrs Debbie Pope
- Mrs Caroline Cleghorn
- Mrs Lucy Johnston-Tierney (Mrs JT)



In Early Years we learn  
through play.  
The adults scaffold our learning and  
our environment supports this,  
providing opportunities for curiosity,  
imagination and to develop the 'whole  
child'



We have a balance of independent  
learning and daily focused activities such  
as reading, writing, phonics,  
mathematics and P.E.



# The Early Years Framework

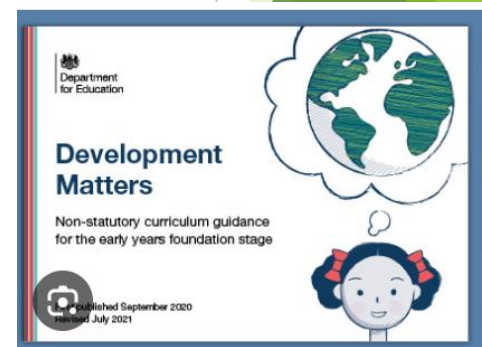
## 3 Prime Areas:

Social and Emotional Development  
Communication and Language  
Physical Development

## 4 Specific Areas:

Maths  
Literacy  
Understanding the World  
Expressive Arts and Design

Look at 'Development Matters' for more information





# Learning To Read

- \* Reading at home and in the environment - resources in packs.
- \* Essential Letters and Sounds Phonics Programme (ELS)
- \* Phonics Books - Directly linked to the phonemes taught during that week and in previous weeks.
- \* Please continue reading for pleasure



# The School Day

- The doors are open at 8.40am and close at 8.45am
- Your child will be greeted at the door and helped to settle in once they arrive.
- Home time is at 3.15pm
- Snacks - fruit / veg provided by school every day
- Water bottles - please send your child in with one that is named!





# School Lunch

All Early Years and KS1 children are entitled to a free school lunch.

They are cooked on the premises by our amazing kitchen staff.

You can find all of our menus on our school website.





# School Milk

- Coolmilk - information in your pack
- Once your child turns 5 years old, it can be paid for via the cool milk website.



# Uniform

- Uniform - on-line
- PE kit
- Forest School kit
- Please name everything (if you want to keep it!)



# Parent Partnership

- ▶ Class emails
- ▶ Parent Curriculum Meetings and Parents Evenings
- ▶ Reading diaries - all on-line
- ▶ School communication and emails
- ▶ Dojo
- ▶ Class assemblies
- ▶ Home learning projects
- ▶ 'In the News' - from the Headteacher



# Being ready for school!

- Independence - dressing self, shoes/socks, coats etc.
- Toileting and handwashing
- Allow time to talk about school and feelings
- Using cutlery to eat
- Respect for toys
- Putting things back where they belong
- Taking turns
- Kindness towards others
- Wiping their nose





# Transition - 2024



## Settling in sessions 9.15-10.15am

Friday 21<sup>st</sup>, Friday 28<sup>th</sup> June, Friday 5<sup>th</sup> July

## Home visits

Wednesday 4<sup>th</sup>, Thursday 5<sup>th</sup>, Friday 6<sup>th</sup> September

# Starting in September 2024

Staggered start from

**Monday 9<sup>th</sup> September (am or pm)**

All of the children will start full time on

**Monday 16<sup>th</sup> September**



# PAWS

Parents at Wheatfields School



# What is a Parent Teacher Association (PTA)?



Aim to provide closer links between home and school by bringing staff, parents/carers and children together socially, working toward a common goal.





# What do we raise money for?

Below are some examples of projects we have recently supported:

## Playground equipment



## Microphones for school Performances



Prizes for competitions

- Public speaking
- Reading



## Blinds for preschool



## Life Bus to support PSHE



## Library Books



## Viking and Roman Days



# How do we raise money?

Sponsored Events



Christmas Fair



School Disco



USED UNIFORM



Auction of promises



Frozen Fridays



Join us outside the link corridor every Friday from 15:15 (summer term only)

Dress down days



Easy Fundraising



Summer Fair



Saturday 22<sup>nd</sup> June  
11:00 – 2:00pm

# How to get involved



- ▶ Sign up for Easy Fundraising
- ▶ Follow us on Facebook (liking/sharing commenting on our posts will help to boost visibility)
- ▶ Come along to our events
- ▶ Helping out with events (could you spare an hour to look after a stall at the summer or Christmas fair)
- ▶ Join us at committee meetings (we meet once per half term, we meet in the Golden Lion Hotel in the Oak Table room). We need more voices to help decide how we should raise money and how to spend it.
- ▶ Join the committee (various roles, currently a vacancy for Chair)



Please experience our  
Early Years  
setting for yourself.

Come and have a look around!

