

Welcome

Early Years New Parents Meeting 2025



Welcome Introductions

Mrs Emma Verney-Davies -
Head Teacher

The EYFS Teachers

Ash & Beech Class

- Mrs Debbie Pope
- Mrs Caroline Cleghorn
- Mrs Lucy Johnston-Tierney (Mrs Tierney)
- Special Needs Co-ordinator (Mrs Clare Probert)
(SENCo)



In Early Years we learn
through play.
The adults scaffold our learning and
our environment supports this,
providing opportunities for curiosity,
imagination and to develop the 'whole
child'



We have a balance of independent
learning and daily focused activities such
as reading, writing, phonics,
mathematics and P.E.



WELCOME TO EYFS

I'M NOT JUST PLAYING

I am learning to balance, so that when I am older and when I am ready I can write using my core, shoulder, arm, wrist, hand and finger strength.

I'M NOT JUST PLAYING

I am exploring my sensory perception in sand, water, mud, kitchen, across my whole environment. I'm developing coordination and control, exploring capacity and how materials behave, and that is just to start!

I'M NOT JUST PLAYING

I am spotting patterns, noticing changes, subitising amounts, counting, recognising digits, to help me with my early maths mastery.

I'M NOT JUST PLAYING

I am working out where my body is in space, so that I can swing, climb, jump, land safely and run in and around objects.

I'M NOT JUST PLAYING

I am hearing and learning songs, recalling shared rhymes, making sense of rhythms, enjoying word games, making funny sounds with my body and my mouth leading the way to become a reader.

I'M NOT JUST PLAYING

I am chatting to myself, my friends and my toys to help me with my listening skills, joining social cues for conversations, laughing at jokes, enjoying stories and rhymes.

I'M NOT JUST PLAYING

I am acting out familiar scenes that I have experienced in my life, to help me to make sense of relationships.

I'M NOT JUST PLAYING

I am working out how to construct the tallest tower, whilst keeping the peace with my friend, who wants to knock it down.

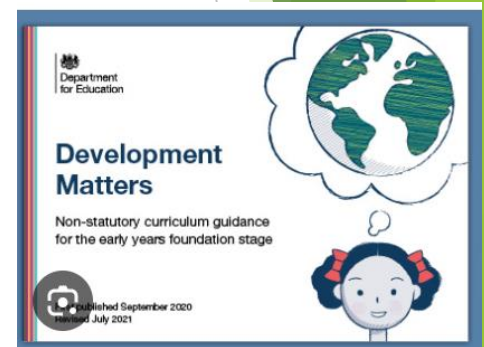
The Early Years Framework

3 Prime Areas:

Personal, Social and Emotional Development
Communication and Language
Physical Development

4 Specific Areas:

Maths
Literacy
Understanding the World
Expressive Arts and Design



Look at 'Development Matters' for more information

Learning To Read

- * Reading at home and in the environment - resources in on-line packs.
- * Essential Letters and Sounds Phonics Programme (ELS)
- * Phonics Books - Directly linked to the phonemes taught during that week and in previous weeks.
- * Please continue reading for pleasure



The School Day

- The doors are open at 8.40am and close at 8.45am
- Your child will be greeted at the rainbow gate (where they line up) and helped to settle in once they arrive.
- Home time is at 3.15pm
- Snacks - fruit / veg provided by school every day
- Water bottles - please send your child in with one that is named.





Timetable

DAY		9:00 –9:30am	9:30 – 11:20am	11:30 – 11:50am	12-1	1- 1:30pm	1:30 – 2:45pm	2:45 – 3:15pm
MONDAY	B L O B B L E W R I T E	Drawing Club: Recycling Day	Busy Learning	Maths White Rose/Karen Wilding	L U N C H	Phonics (Au2, W3, ng)	Busy Learning	Storytime:
TUESDAY		Phonics (Au2, W3, nk)	Forest School –Ash & Beech Class			Maths White Rose/Karen Wilding	Busy Learning	Storytime:
WEDNESDAY Caroline In		Drawing Club: Recycling Day	Storytime: Breaktime: 10:30am Busy Learning	Maths White Rose/Karen Wilding		Phonics (Au2, W4, ai)	Busy Learning	Storytime:
THURSDAY Caroline In		Phonics (Au2, W4, oa)	PE - CC leading with LSA support; LJ-T pre- school visit LSA Breaks - 10.20- 10.35	Busy Learning		Maths White Rose/Karen Wilding	Busy Learning	Storytime:
FRIDAY Caroline In		Collect in books Drawing Club: Recycling Day	Busy Learning HTA Assembly 10.20- 10.40	Maths White Rose/Karen Wilding		Phonics (Au2, W4 review)	Busy Learning	2.45-3.05 Singing and Sharing assembly





School Lunch

All Early Years and KS1 children are entitled to a **free** school lunch.

They are cooked on the premises by our amazing kitchen staff. We avoid high levels of salt and sugar which can negatively affect learning and memory.

You can find all of our menus on our school website.



School Meal Menu

Weeks commencing: 23 April 12 May 9 June 30 June 21 July

Monday	Tuesday	Wednesday	Thursday	Friday
Beef Burger Bap Cheese Burger Bap	Roast Gammon	Meat Balls with Tomato Pasta	Selection of Pizza	Fish Fingers Fish Cakes
Quorn Burger Bap ①	Cheese Quiche①	Quorn Balls with Tomato Pasta ①	Jacket Potato with fillings①	Vegetable Fingers①
Diced Potatoes Baked Beans Sweetcorn	Roast/Mashed Potatoes Carrots Broccoli	Garlic Bread Peas Sweetcorn	New Potatoes Spaghetti Hoops Broccoli	Chips Tomato Bread Baked Beans, Peas
Selection of Salad Filled Rolls	Selection of Salad Filled Rolls	Selection of Salad Filled Rolls	Selection of Salad Filled Rolls	Selection of Salad Filled Rolls
Fruit Jelly	Summer Fruit Crumble & Custard Melon Slice	Ice Cream & Biscuits	Flapjack Peaches in Juice	Chocolate Muffins
Homemade Biscuits	Homemade Biscuits	Homemade Biscuits	Homemade Biscuits	Homemade Biscuits
<p>Available daily: Salad Bar, Freshly Baked Bread Fresh Fruit, Yoghurt <i>All meals are served with water</i></p>				

School Milk

- Coolmilk - information in your pack
- Once your child turns 5 years old, it can be paid for via the cool milk website.



Uniform

- Uniform - on-line
- PE kit (black or navy blue)
- Forest School kit (puddlesuit, wellies, warm jumper to go over school jumper). In a named bag please.
- Please name everything (if you want to keep it!)



Parent Partnership

- ▶ Parent Curriculum Meetings and Parents Evenings
- ▶ Reading diaries
- ▶ School communication and emails
- ▶ **Dojo - look out for the link 😊**
- ▶ Class assemblies
- ▶ Home learning projects

Being ready for school!

- Independence - dressing self, shoes/socks, coats etc.
- Toileting and handwashing
- Allow time to talk about school and feelings
- Using cutlery to eat
- Respect for toys
- Putting things back where they belong
- Taking turns
- Kindness towards others
- Wiping and blowing their own nose



Transition - 2025



Settling in sessions 9.15-10.15am

Friday 20th, Friday 27th June, Friday 4th July

Home visits

Wednesday 3rd, Thursday 4th, Friday 5th September



Starting in September 2025

Staggered start from

Monday 8th September (am or pm)

All of the children will start full time on

Monday 15th September



PAWS

Parents at Wheatfields School



What is a Parent Teacher Association (PTA)?



Aim to provide closer links between home and school by bringing staff, parents/carers and children together socially, working toward a common goal.



What do we raise money for?

Below are some examples of projects we have recently supported:

Playground equipment



Microphones for school Performances



Prizes for competitions

- Public speaking
- Reading



Blinds for preschool



Viking and Roman Days



Life Bus to support PSHE



Library Books



How do we raise money?

Sponsored Events



Christmas Fair



School Disco



USED UNIFORM



Auction of promises



Frozen Fridays



Join us outside the link corridor every Friday from 15:15 (summer term only)

Dress down days



Easy Fundraising



Summer Fair



Saturday 22nd June
11:00 – 2:00pm

How to get involved



- ▶ Sign up for Easy Fundraising
- ▶ Follow us on Facebook (liking/sharing commenting on our posts will help to boost visibility)
- ▶ Come along to our events
- ▶ Helping out with events (could you spare an hour to look after a stall at the summer or Christmas fair)
- ▶ Join us at committee meetings (we meet once per half term, we meet in the Golden Lion Hotel in the Oak Table room). We need more voices to help decide how we should raise money and how to spend it.
- ▶ Join the committee (various roles, currently a vacancy for Chair)



Please experience our
Early Years
setting for yourself.

Come and have a look around!

